



COMPANY

Profile

2
0
2
4

GTconsult

GTconsult is a leading provider of SharePoint services, helping businesses around the world to improve their collaboration, document management, and business intelligence. We offer a wide range of services, including implementation, migration, training, and support.

www.gtconsult.com



Table of Contents

● About us		02
● Development		04
	Intranets & landing pages	
	Business Automation	
	Infomailers	
	SharePoint Workbench	
	Digital Forms	
	Aspire	
	Agility	
	Attend	
	Joiners and Leavers	
	IT Asset Management	
	Expense Claims	
	Capital Expenditure	
● Support		07
	Migrations	
	Helpdesk & Support	
	Maintenance	
	Configuration & Roll Out	
	Upgrades	
	Audits	
	New Installations	
● Protection		10
	External Vulnerability assesment	
	Internal Vulnerability Assessment	
	Penetration Testing	
	Security Governance Workshop	
	SharePoint on Premise Vulnerability assessment	
	Office 365 Security Assessment	
	MFA Configuration	
	Mobile Device Management	
	Microsoft InTune Configuration & Roll Out	
● A Team Agreements		13
● Case Studies		14
● Contact Us		15

About GTconsult

Founded in South Africa in 2011, GTconsult expanded its horizons by venturing into the UK and US markets in 2016. We now have a presence in Johannesburg, Cape Town, Durban, as well as offices in London, Seattle, and Indiana.

GTconsult is the go-to consultancy, specializing in leveraging Microsoft Modern Workplace solutions to tackle clients' real business challenges and drive effective solutions.

GTconsult began as the brainchild of Bradley Geldenhuys and Craig Tarr who are still key stakeholders in the company and are accomplished technological experts in their own right. Having established a name in the industry through dedication to the core belief that technology could be implemented more effectively, the modest company has grown into the proud business that it is today.

Our dynamic team, comprising certified Microsoft consultants and developers, expert architects, creative designers, proficient infrastructure and cloud specialists, and dedicated security researchers, forms a cohesive unit that addresses all your Microsoft Modern Workplace needs across the three crucial pillars of development, support, and protection.

Our motto is a commitment: Empowering Productivity in the Microsoft Modern Workplace.

We proudly hold the certification of an Enterprise Microsoft Solutions Partner for Modern Work, showcasing our extensive capabilities in empowering customers to enhance productivity and seamlessly transition to hybrid work environments with the full potential of Microsoft 365



GTconsult is a cutting edge consultancy that is technologically driven and provides bespoke productivity solutions that leverage off collaboration software.

GTconsult is a forward-thinking consultancy at the forefront of the modern workplace. We harness technology to deliver tailor-made productivity solutions, providing support, and fortifying your environment to optimize collaboration software, protect critical assets, and support your workforce.

At GTconsult, our extensive experience spans various industries, including financial services, telecommunications, retail, industrial, and media. Our commitment to service excellence is underpinned by our team's strategic expertise, with several key members holding MBAs from reputable institutions.

We are deeply rooted in community engagement, with our team actively participating in SharePoint Saturdays and Information Worker community events. Our passion and dedication to IT, coupled with our experience and certifications, enable us to provide valuable insights to companies.

What sets us apart is our unwavering commitment to each project, driven by our genuine love for technology. Our core service offering is built on establishing credibility at every client interaction and closing with a level of professionalism that ensures peace of mind.

Our rapid growth in the industry is a testament to our genuine passion for technology. At GTconsult, we are tech enthusiasts who love what we do, and we're dedicated to exceeding our clients' expectations.

We focus on three key areas:

A3Team
S U P P O R T

A3team
DEVELOPMENT

A3team
PROTECTION

Development

Intranets & landing pages

Business Automation

Infomailers

SharePoint Workbench

Digital Forms

Aspire

Agility

Attend

Joiners and Leavers

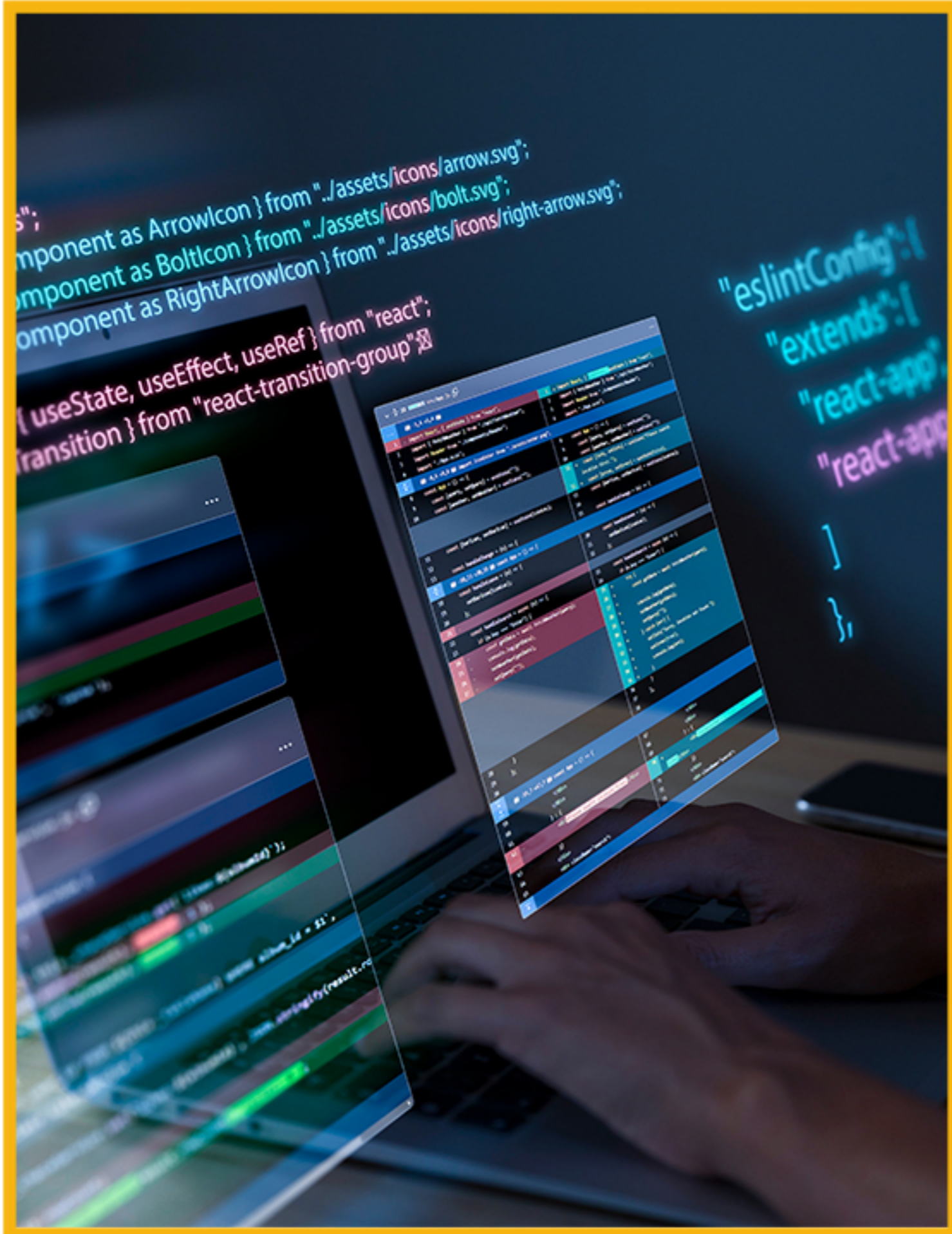
IT Asset Management

Expense Claims

Capital Expenditure

Development

Custom workflows, intranets, business solutions and line-of-business integrations with Microsoft SharePoint, Microsoft Office 365 and Microsoft Azure.



All your development needs

We have handpicked the members of our A Team so you can rest assured knowing that you will only receive the highest quality of work.

Leverage the A Team

You will have some of the best engineers, designers, developers and testers in the world working to enable productivity in your business.

Regular updates

You will have a dedicated project manager to give you regular updates on the progress of your project and give you real-time updates.

Ongoing development

Our A Team is constantly learning and upskilling themselves and are on the cutting edge of any new development and tech out there.

Intranets and landing pages

Our responsive & customized intranets and landing pages are designed using templates which are easy to edit and deploy saving you time and money. All GTconsult intranets and landing pages are intuitive and consistent, they are designed with the end user in mind.

Each template is tailored to meet your company's needs and corporate identity.



INFOMAILERS
GTCONSULT
enabling productivity

GTconsult

Business Automation.

Our A Team has been automating business processes for years and has helped a multitude of businesses grow, scale and become more profitable.

InfoMailers.

Introducing InfoMailers, leveraging your existing SharePoint datastore to send you (and your business) daily information right to your mailbox to be accessed via PC, mobile, tablet and phablet.

Development

SharePoint Workbench

GTconsult is redefining the way you use SharePoint with software as an application. Our responsive, high-performance workbenches are a platform through which you can access and manage queues of information.

Attend

An event management solution, built in SharePoint, that allows you to create events for your organization and have employees sign up and attend.

Agility

Agility enables you to create, manage and close projects via SharePoint. Resources can be assigned to project tasks to provide the project manager with real-time overview of their projects.

IT Asset Management

Maintain control of the assets within your organization to understand who is assigned what and managing the life cycle of those devices.

Travel Request Solution

Facilitate arrangements for travel requests which includes flights, accommodation and car hire.

Leave Management

Request and manage leave from SharePoint for all of your employees in one place.

Joiners and Leavers

Simplifying the complex and often tedious onboarding and offboarding process for employees by assigning tasks to relevant employees to ensure that the new starter has all that they need on their first day of employment

Digital Forms

Modernize your paper based forms by digitizing them on SharePoint and transform them with a workflow process. No more paper!

Expense Claim

Speed up the expense claim process by allowing employees to claim for expenses through an approval workflow on SharePoint



Aspire

Aspire is a personal improvement solution in SharePoint that helps employees and managers track performance and goals throughout the year by utilising KPA's. It empowers managers to provide accurate feedback during the employee's performance review of their past twelve months.

Capital Expenditure

Request for CapEx through SharePoint that can go through multiple levels of approval before it is approved.

Support

Migrations

Helpdesk & Support

Maintenance

Configuration & Roll Out

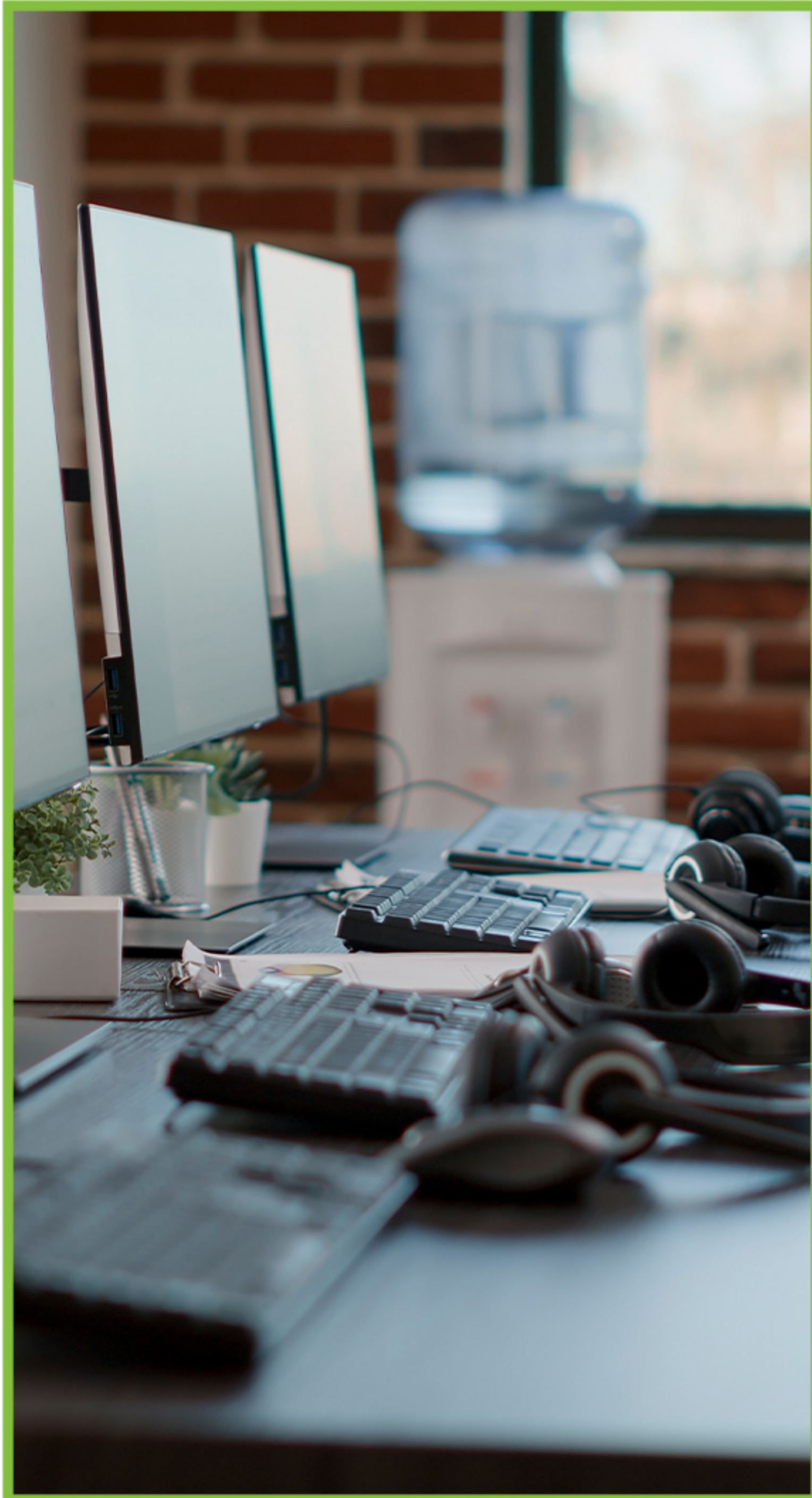
Upgrades

Audits

New Installations

Support

Migrations, helpdesk & support, configuration and roll out of Microsoft SharePoint, Microsoft Office 365 and Microsoft Azure.



Remotely located.

The A Team Support team is located remotely around the world and specialize in the SharePoint, Office 365 and Azure platforms.

Up-to-date support.

The team is up to date with the latest releases in this space and we keep our finger on the pulse as far as the Microsoft update feed goes.

Strategic approach

You no longer have to take stabs in the dark regarding your patches, migrations and support. Rest easy knowing you are fully supported.

SLA agreement

A ticket is logged and evaluated by an available A Team member and assigned a priority based on a predefined SLA agreement.

Maintenance

System Maintenance is the process of keeping a server or software updated and running so that a network can operate smoothly and avoid downtime or loss of data. Regular maintenance will keep the server or software running as expected and will help avoid a total or partial network or software failure.

Migrations

Migration of data is the process of selecting, preparing, extracting, and transforming data and then permanently transferring it from one storage system to another. Be it SharePoint On-prem or Office 365.

Helpdesk & Support

Helpdesk Support is your first line communication channel to organize customers issues or queries effectively.

Support



Configuration and roll out

Auditing the current configuration, understanding the end-result and then rolling out the plan of action.



Upgrades

Ensure your SharePoint is up-to-date by upgrading to a new version with our expert assistance.



Audits

An event management solution, built in SharePoint, that allows you to create events for your organization and have employees sign up and attend.



New Installations

Modernize your paper based forms by digitizing them on SharePoint and transform them with a workflow process. No more paper!

Learn More:

Sharepoint Migration:



Upgrading SharePoint 2016 to SharePoint 2019 step-by-step

SharePoint Online: The Upgrade Your Business Needs:



Protection

External Vulnerability assesment

Internal Vulnerability Assessment

Penetration Testing

Security Governance Workshop

SharePoint on Premise Vulnerability
assessment

Office 365 Security Assessment

MFA Configuration

Mobile Device Management

Microsoft InTune Configuration & Roll Out

Development

We hack you before you get hacked. Hire a hacker and receive a real-world attack scenario without the devastating consequences. Mitigate your risk with the cover of A Team Protection.



Real-world attacks

Receive a real-world attack without the consequences. Our RED TEAM will craft a custom-designed attack based on your network.

Be proactive

Plug the holes in your defences and decrease your chances of being hit by malware, ransomware and misconfigurations in your environment

In-depth analysis

Get a detailed, in-depth report of the strengths and weaknesses on your environment with recommendations on how to increase your security.

Constant updates

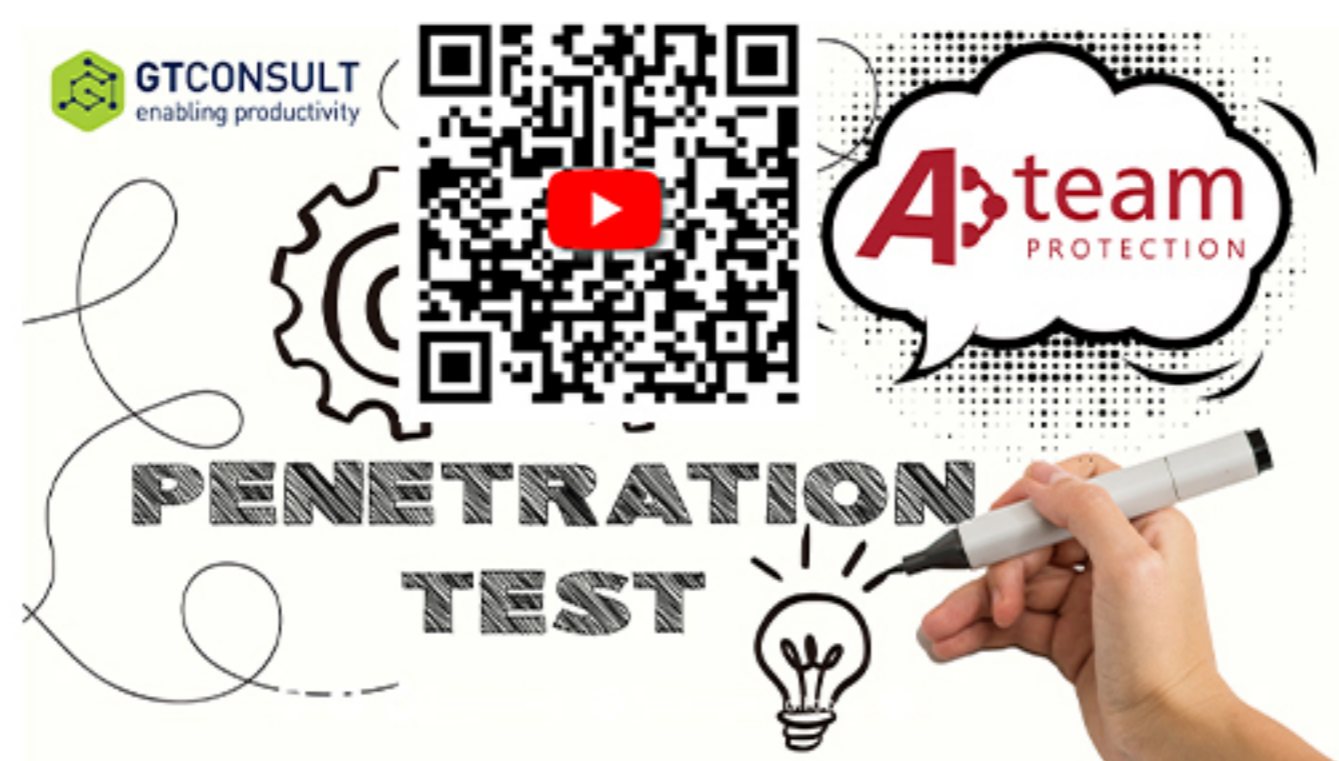
Our RED TEAM regularly scans your environment and lets you know if you are susceptible to the latest CVEs, exploits and vulnerabilities..

External Vulnerability Assessment

Our external vulnerability assessment will scan for all security flaws on your public facing services that might lead to information leakage or system compromise and we will provide recommended mitigations to help your team plug any issues found.

Internal Vulnerability Assessment.

Our internal vulnerability assessment is done from the perspective of a malicious individual already in your local network, a usually overlooked part of the network, which we will then look for any issues that could cause information leakage or system compromise. Our report will also include recommendations for mitigating the issues found.



Development

Penetration testing

Penetration testing assignments expand upon a vulnerability assessment and perform actual real world penetration attacks in a safe and controlled manner to test your networks on the front lines and provide a more accurate understanding of where the holes are that could lead to information leakage and system compromise.

Security Governance Workshop

The weakest link in any networks security is most often the people who use them. Social engineering attacks are ever rising and our workshop will help train your employees on the do's and don'ts of working in our cyber world as well as teaching about dangerous and suspicious behaviours to look out for.

SharePoint On Premise Vulnerability Assessment

Our SharePoint On Premise vulnerability assessment will scan for all security flaws that might lead to information leakage or system compromise and we will provide recommended mitigations to help your team plug any issues found.

Office 365 Security Assessment

Understanding cloud security objectives and requirements. Gain an understanding of the customers business requirements and how they drive security objectives and requirements. We also provide guidance, recommendations and best practices on how to successfully implement Office 365 security features and provide a prioritized and actionable Office 365 security road map based on customer security objectives and requirements.

Long-term Security Strategies

Simplifying the complex and often tedious onboarding and offboarding process for employees by assigning tasks to relevant employees to ensure that the new starter has all that they need on their first day of employment

MFA Configuration

MFA is a must have in the modern cyber landscape. With the amount of data breaches and the speed at which brute-force attacks can happen, a single password is no longer a secure option for authentication. Once enabled, Multi-factor authentication will become a second layer of security, requesting an OTP which is sent directly to the legitimate user attempting to log in. It is highly recommended to have this enabled.



Mobile Device Management

Every modern workplace usually allows for certain company assets like email or intranets to be accessed by user's personal mobile devices. Unmanaged this can be a major risk as these devices are uncontrolled and could be open to external viruses or hackers. MDM allows for company data to be securely controlled and encrypted on user's personal devices, vastly reducing the risk of data leakage.

Microsoft InTune Configuration and Roll Out

Microsoft Intune combines MFA and MDM functionality and applies your company's rules and policies to all devices according to predefined policies making their management easy and helping admins keep track of all devices. We will take you through all 9 steps for configuring and rolling out InTune to your organization from determining goals and requirements, uncovering challenges, developing rollout communication plans and all the way to testing and making sure your InTune is protecting your business the way you need it to.

Introducing: A Team Agreements

Goodbye Projects!

We are phasing out projects and taking a new approach so that we can understand your needs better. Our new **A Team Agreements** are aimed at providing you with a complete solution to answer all









Agreement

-  Agreements can lead to ongoing support or extra development for the business.
-  OPEX model is more attractive and can be used when there are budget constraints when requesting CAPEX.
-  Agile development process which means changes to the project can be accommodated without much fan fair.
-  Full access to A Team Development, Support and Protection teams.

Project

-  Projects that require support after delivery may be rejected by business due to CAPEX restraints.
-  Raising CAPEX for a project may take months. If anything changes, the process is halted.
-  Change control process requiring a request for the raising of additional CAPEX.
-  Access to specific team members only.

Benefits

-  Assigned dedicated team
-  Experienced industry leaders
-  Project flexibility
-  Long term relationship
-  OPEX cost fixed
-  Indepth roadmaps
-  One-on-one Bluesky events
-  On-going support

Case Studies

Find out how we helped our clients enable productivity in their business.



GTconsult offered a low cost, easy to customize and deploy solution on a well adopted framework – Sharepoint Online. They have excellent understanding of the technology and can offer great advice for a good outcome. They ran the project with good governance to ensure we meet the deadlines.



GTconsult created a new SharePoint-based intranet for us. The site was heavily customized, with a user-friendly design and numerous workflows to allow for quick and easy updating.



In African Unity's own experience – GTconsult is solution driven and get the job done.



The solutions created by GTconsult exactly addressed the original business needs discussed when we started the journey to create these custom workbenches. The workbenches offer a fast, stable and cost effective solution to address a real business need.



GTconsult being experts in their field assisted us with the adoption of office 365 services in our Enterprise, which has taken us to the next level of Cloud computing.





Contact

Us



+27 87 655 5555
hello@gtconsult.com
www.gtconsult.com